

General Order Application: Portable and Stationary Concrete Batch Plants

I. INSTRUCTIONS

This application applies statewide for facilities under the Department of Ecology's jurisdiction. Fill out the form completely in order to obtain coverage.

- Read the Portable and Stationary Concrete Batch Plant General Order. You can find it online at www.ecy.wa.gov/programs/air/AOP_Permits/Boiler/GeneralOrders.htm, or call the appropriate regional office (see below) for a copy.
- Fill out the application completely, sign it, and date it.
- Enclose manufacturer's specification sheets for the concrete plant. Include baghouse specifications for each baghouse. Each baghouse must have a particle removal efficiency of at least 99.9 percent and must be equipped with a differential pressure gauge to measure pressure drop across the bags.
- Enclose a check to the Department of Ecology for the application fee.
- State Environmental Policy Act (SEPA) Compliance
 - \$500 application fee** if SEPA review is complete – Include a copy of the final SEPA checklist and SEPA determination (e.g., DNS, MDNS, EIS) with your application.
 - \$785 application fee** if SEPA review is required – If SEPA review has not been conducted, please fill out a SEPA checklist and submit it with your application. You can find a SEPA checklist online at www.ecy.wa.gov/programs/sea/sepa/docs/echecklist.doc.

- Mail the complete application package to:

For Fiscal Office Use Only:
001-NSR-216-0299-000404

Department of Ecology
Cashiering Unit
P.O. Box 47611
Olympia, WA 98504-7611

DEPT. OF ECOLOGY
FISCAL & BUDGET
JUN -1 P 2:15

Check the box for the location of your proposal or if operating as a portable source, the next location you will operate your concrete batch plant. For assistance, call the appropriate office listed below:

<input type="checkbox"/>	Chelan, Douglas, Kittitas, Klickitat, or Okanogan County Ecology Central Regional Office (509) 575-2490	CRO
<input checked="" type="checkbox"/>	Adams, Asotin, Columbia, Ferry, Franklin, Garfield, Grant, Lincoln, Pend Oreille, Stevens, Walla Walla, or Whitman County Ecology Eastern Regional Office (509) 329-3400	ERO
<input type="checkbox"/>	San Juan County Ecology Northwest Regional Office (425) 649-7000	NWRO
<input type="checkbox"/>	For actions taken at Kraft and Sulfite Paper Mills and Aluminum Smelters only Ecology Industrial Section (360) 407-6900	IND

<input type="checkbox"/>	For actions taken on the US Department of Energy Hanford Reservation only Ecology Nuclear Waste Program (509) 372-7950	NWP
--------------------------	--	-----

II. COMPANY INFORMATION

1. Company Name: CPM Development Corp.		
2. Company Mailing Address (street, city, state, zip): PO Box 3366, Spokane, WA 99220		
3. Company Contact Person, Title: Jana McDonald, Environmental Manager	4. Company Phone Number: 5095346221	5. Company Fax Number: 5095363051
6. Contact Person Phone Number: 5095346221	7. E-Mail Address: Jana.mcdonald@na.crh.com	

III. PLANT INFORMATION

A. ALL PLANTS

1. Approximately how many cubic yards of concrete do you expect to produce per year? <u>74,500</u> cubic yards per year <small>(Actual annual concrete production cannot exceed 74,500 cubic yards for in-transit mix plants or 246,000 cubic yards for central mix plants.)</small>	
2. Will all cement and supplement silos be controlled by a baghouse?	<input checked="" type="checkbox"/> Yes <input type="checkbox"/> No
3. Will all silos be equipped with a level indicator alarm or level indicator lights?	<input checked="" type="checkbox"/> Yes <input type="checkbox"/> No
4. Will the cement/supplement weigh hopper be enclosed and vented to a baghouse?	<input checked="" type="checkbox"/> Yes <input type="checkbox"/> No
5. Do all silo and dust collection baghouses have a differential pressure gauge that measures the pressure between the inlet and outlet of the baghouse?	<input checked="" type="checkbox"/> Yes <input type="checkbox"/> No
6. Does this concrete batch plant have a fuel-fired water heater or boiler? Provide manufacturer specification sheets that include model, heat capacity, and fuel type (e.g., natural gas, propane, LPG, diesel) for each unit. Please attach additional sheets if there are more than 2 units.	<input checked="" type="checkbox"/> Yes <input type="checkbox"/> No
Combustion Unit 1 Type <u>Infern-o-Therm</u> Rating <u>828,000</u> BTU/hr Fuel Type <u>Diesel</u>	Combustion Unit 2 Type: _____ Rating: _____ BTU/hr Fuel Type _____

B. CENTRAL MIX PLANTS

Check this box and fill out this section if you are requesting a permit for a Central Mix Concrete Batch Plant

RECEIVED
 JUN 07 2018
 Department of Ecology
 Eastern Washington Office

1. Will the central mixer be enclosed and vented to a dust collection baghouse?	<input type="checkbox"/> Yes <input type="checkbox"/> No
---	--

C. IN-TRANSIT MIX PLANTS

Check this box and fill out this section if you are requesting a permit for an In-Transit Mix Concrete Batch Plant

1. Will there be a flexible boot or other flexible containment system that fits into/around the truck mixer?	
<input type="checkbox"/> Yes, specify type: <u>Live Rubber boot</u>	<input type="checkbox"/> No
2. Will the truck charging station be shrouded and vented to a dust collection baghouse? <input checked="" type="checkbox"/> Yes <input type="checkbox"/> No	
<i>(Note: A dust collection baghouse is required for all stationary in-transit mix concrete plants producing over 15,000 cubic yards per year.)</i>	

D. STATIONARY PLANTS

Check this box and fill out this section if you are initially locating the concrete batch plant as a stationary source.

1. Stationary Facility Name:	
2. Facility Location:	3. County:
4. Construction Start Date:	5. Total Property Area (acres): <i>(Plant must be located on at least one acre)</i>
6. What is the maximum rated hourly plant capacity of your concrete batch plant in tons per hour? _____ tons per hour <i>(A cubic yard of concrete approximately equals 2 tons)</i>	7. Power Source: <input type="checkbox"/> Line Power <input type="checkbox"/> Other (specify): <i>(If line power is not used, a separate Notice of Construction air quality permit is required for power generators.)</i>
8a. Is the maximum rated plant capacity greater than 300 tons per hour? <input type="checkbox"/> Yes <input type="checkbox"/> No	
8b. Do you anticipate producing more than 15,000 cubic yards of concrete in any consecutive 12-month period? <input type="checkbox"/> Yes <input type="checkbox"/> No	
Note: If you answered yes to either of these questions and your plant is a stationary in-transit mix concrete plant, your truck charging station will need to be shrouded and vented to a dust collection system.	

E. PORTABLE¹ PLANTS

Check this box and fill out this section if you are initially locating your concrete batch plant as a portable source.

¹ A portable concrete plant may locate at any location for one year or less.

RECEIVED
 JUN 07 2018
 Department of Ecology
 Eastern Washington Office

1. Portable Plant Name (A separate application must be filled out for each plant):

Con-E-Co Low Pro 12

2. Plant Operator: **TBD**

3. Plant Operator's Phone Number: **TBD**

4. Temporary Location Information (Please include information for your next anticipated operating location):

Quantity of Material to be Produced: _____ cubic yards

Intended Dates of Operation: From: **TBD** To: _____

Site Name: **TBD** County: _____

Legal Description: Quarter _____; Section _____; Township _____; Range _____

5. Provide manufacturer's specification information on any power generators listed below. Attach additional sheets if there are more than 4 units.

5a.

Engine manufacturer: _____
Model: _____
Year of manufacture: _____
Serial number: _____
Engine size: _____ hp
Max electrical output _____ kWe
Height of exhaust stack: _____ feet
Fuel: _____
Maximum hourly fuel: _____ gal/hr

5b.

Engine manufacturer: _____
Model: _____
Year of manufacture: _____
Serial number: _____
Engine size: _____ hp
Max electrical output _____ kWe
Height of exhaust stack: _____ feet
Fuel: _____
Maximum hourly fuel: _____ gal/hr

5c.

Engine manufacturer: _____
Model: _____
Year of manufacture: _____
Serial number: _____
Engine size: _____ hp
Max electrical output _____ kWe
Height of exhaust stack: _____ feet
Fuel: _____
Maximum hourly fuel: _____ gal/hr

5d.

Engine manufacturer: _____
Model: _____
Year of manufacture: _____
Serial number: _____
Engine size: _____ hp
Max electrical output _____ kWe
Height of exhaust stack: _____ feet
Fuel: _____
Maximum hourly fuel: _____ gal/hr

RECEIVED
JUN 07 2018
Department of Ecology
Eastern Washington Office

IV. SIGNATURE BLOCK

I certify, based on information and belief formed after reasonable inquiry, the statements and information in this application are true, accurate, and complete.

Printed Name John Madden Title General Mgr.

Signature [Signature] Date 5.31.18

If you need this document in a format for the visually impaired, call the Air Quality Program at 360-407-6800. Persons with hearing loss can call 711 for Washington Relay Service. Persons with a speech disability can call 877-833-6341.

RECEIVED
JUN 07 2018
Department of Ecology
Eastern Washington Office

Plant Information

Plant	Coneco model # Low Pro 12
Type	Dry Batch
Capacity	180 YPH
Annual	Less than 74,500yds
Silo	Baghouse PJC300S
Cement	Vented to baghouse BV-14
Boot	Live rubber boot
Shroud	Yes
Mixer	No
Boiler	Yes diesel
Drawing	Yes
Spec	Yes
Gauge	Yes

RECEIVED
JUN 07 2018
Department of Ecology
Eastern Washington Office

Water Heater



PO BOX 190
AEROMARINE TERMINAL
KEYPORT NJ 07735
PH: 732-264-7700 FX: 732-888-0115

INFERN-O-THERM CORP.

FROM: JAY GOSSETT / CONAGSCO, INC.

August 17, 2010

Green & White Rock

ATTN: Sean

Quote: 112845-S

HW-6-200: 6,000 gallon hot water storage tank. Tank is mounted on full-length skid of 15" x 33.9# channel, with 24" manhole and 3" vent. Constructed of 1/4" steel shell and 5/16" reinforced heads welded inside and out. One 3" head mounted discharge port, one 2" drain port, and one 2" water inlet to spray bar, all located at bottom of tank head for ease of installation. A dial thermometer is included on burner head. Two heavy-duty lifting lugs are top mounted. (for use when tank is empty).

TANK INSULATION: Insulated with three inch, 4 pound density THERMAFIBER mineral wool (R Value of 12.75) with poly-vapor barrier for future cold water storage and covered with .024" stucco embossed aluminum jacket.

MAIN COMBUSTION TUBE: 16" primary tube with one 8" secondary heat transfer tube, and one 8" stack.

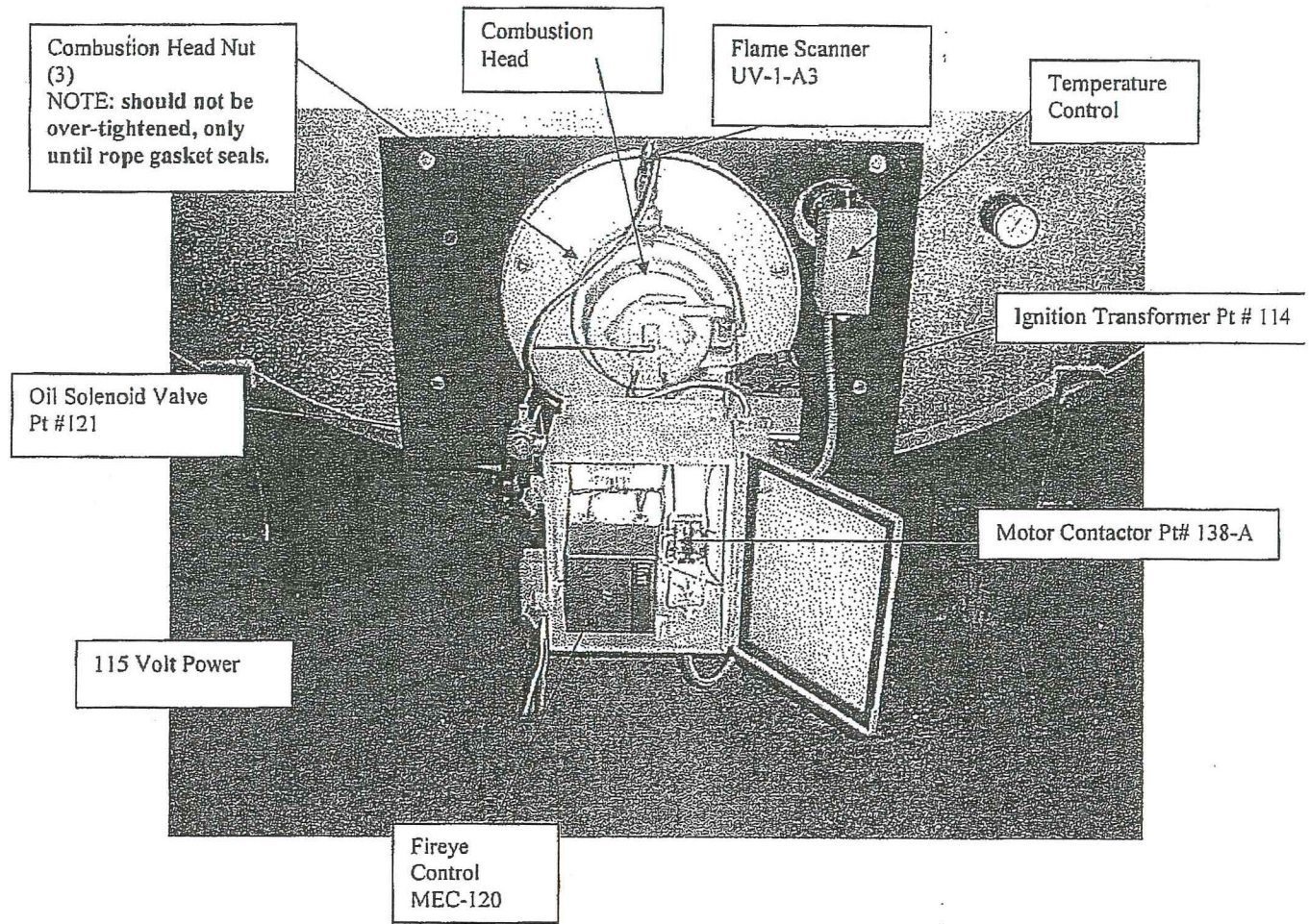
INFERN-O-THERM BURNER MODEL 200: This is a heavy duty, industrial quality burner, designed and manufactured by I-O-T for the process industry. The design of the Inferno-Therm burner, causes the air to travel down the length of the fire-tube in a spiral manner, "scrubbing" the entire wall of the fire-tube creating complete heat transfer. Standard is #2 fuel oil with 828,000 BTU per hour input. natural gas, propane, and combination burners are optional. Burner is equipped with Honeywell automatic water temperature control, high limit control with manual reset, Fireye flame control with U.V. flame scanner, alarm circuit with horn, and weatherproof cover with hinged door. The control box is NEMA 13. Fan motor is TEFC with 1.15 S.F. All burners use UL approved controls. (NO AIR ADJUSTMENT REQUIRED)

SYSTEM CAPACITY: System will supply 12,768 gallons at 100 degree rise in eight hours and will recover at the rate of 846 gallons per hour. Tank can be used as a surge tank or chiller storage tank for the summer months.

WATER INLET CONTROL SYSTEM: Consists of a spray bar located in the top side of the tank, high water float switch to maintain water level, water inlet manifold with flow restrictors to maintain constant water temperature in tank. Hand valve to

HEATING SYSTEM SPECIALISTS

Department of Ecology
Palmer Yasniwicz
RECEIVED
JUN 07 2018



MODEL #

48/13-200 Oil Fired Burner

48/13	—2.25 GPH Nozzle	310,500	BTU per hr
48/100	- 3.00 GPH Nozzle	414,000	BTU per hr
150	----- 4.50 GPH Nozzle	621,000	BTU per hr
200	----- 6.00 GPH Nozzle	828,000	BTU per Hr

DIESEL

Department of Ecology
Eastern Washington Office

JUN 07 2018

RECEIVED

Mixer-loading Shroud

SPECIFICATIONS FOR MODEL PJ-980 DUST COLLECTION SYSTEM

MODEL CON-E-CO PJ-980

NUMBER OF BAGS	66
NOMINAL BAG DIAMETER	6"
NOMINAL BAG LENGTH	120"
TOTAL FILTRATION AREA	980 SQ. FT.
MIN. DESIGN EFFICIENCY OF DUST COLLECTOR	99.9%
AIR TO CLOTH RATIO	6.0 TO 1.0
BLOWER HP	15 HP
STATIC PRESSURE DROP	8" (INCHES OF WATER)
BLOWER CAPACITY	5880 C.F.M.
DISCHARGE AREA	2.3 SQ. FT.
DISCHARGE VELOCITY	42.7 FT. / SEC.
DIRECTION OF AIR DISCHARGE	HORIZONTAL
DISCHARGE SHAPE	15 3/4" X 21" RECTANGLE
OUTLET MOISTURE CONTENT	IDEALLY ZERO
CLEANING MECHANISM	PULSE JET
FREQUENCY OF CLEANING	VARIABLE
NORMAL OPERATING TEMP & PRESSURE	AMBIENT

BAG SPECIFICATIONS

BAG DIAMETER	5.93"
BAG LENGTH	121"
CONSTRUCTION	SEAMED
FIBER	POLYESTER FELT
FINISH	SINGED
WEIGHT	16 OZ / SQ. YD.
PERMEABILITY (.5" WATER)	20-30 CFM
FIBER SIZE	2.5 DENIER AVERAGE

INTO BAGS

CEMENT SILO

LB / HR
GR / FT³

INTO BAGS

.177 LB/YD³* ___ YD³/HR
.020 GR HR/LB FT³* ___ LB/HR

FLYASH SILO

LB / HR
GR / FT³

INTO BAGS

.115 LB/YD³* ___ YD³/HR
.020 GR HR/LB FT³* ___ LB/HR

CENTRAL MIX

LB / HR
GR / FT³

.153 LB/YD³* ___ YD³/HR
.020 GR HR/LB FT³* ___ LB/HR

TRUCK MIX

LB / HR
GR / FT³

.281 LB/YD³* ___ YD³/HR
.020 GR HR/LB FT³* ___ LB/HR

OUT OF BAGS

FOR ALL OUT OF BAGS VALUES, MULTIPLY THE INTO BAGS VALUES BY .001..

RECEIVED
JUN 07 2018
Department of Ecology
Eastern Washington Office

Coneco
Low Pro 12
Silo

SPECIFICATIONS FOR MODEL PJC-300 CARTRIDGE DUST CONTROL

MODEL CON-E-CO-PJC-300

NUMBER OF CARTRIDGES	4
NOMINAL CARTRIDGE DIAMETER	8"
NOMINAL CARTRIDGE LENGTH	78"
TOTAL FILTRATION AREA	304 SQ. FT.
MIN. DESIGN EFFICIENCY OF DUST COLLECTOR	99.9%
AIR TO CLOTH RATIO	5.0 TO 1.0 (CEMENT)
CAPACITY FOR CEMENT	1,500 C.F.M.
CAPACITY FOR FYLASH	1000 C.F.M.
BLOWER HORSEPOWER	7 1/2 HP
BLOWER CAPACITY	1,500 CFM @ 6" WATER
DISCHARGE SIZE	7 1/8" X 5 3/4"
DISCHARGE AREA	.28 SQ. FT.
DISCHARGE VELOCITY @1500 C.F.M.	92 FT. / SEC.
DIRECTION OF AIR DISCHARGE	HORIZONTAL
OUTLET MOISTURE CONTENT	IDEALLY ZERO
NORMAL OPERATING TEMP & PRESSURE	AMBIENT
CLEANING MECHANISM	PULSE JET
FREQUENCY OF CLEANING	VARIABLE

CARTRIDGE SPECIFICATIONS

CARTRIDGE DIAMETER	7 7/8" O.D.
CARTRIDGE LENGTH	78 3/4"
CONSTRUCTION	PLEATED
FIBER	SPUN BONDER POLYESTER
WEIGHT	8 OZ / SQ. YD.
PERMEABILITY (.5" WATER)	24 CFM/SQ FT

DISCHARGE INTO BAGS

CEMENT SILO

LB / HR
GR / FT³

INTO BAGS

.177 LB/YD³* __ YD³/HR
.078 GR HR/LB FT³* __ LB/HR

FLYASH SILO

LB / HR
GR / FT³

INTO BAGS

.115 LB/YD³* __ YD³/HR
.117 GR HR/LB FT³* __ LB/HR

OUT OF BAGS

FOR ALL OUT OF BAGS VALUES, MULTIPLY THE INTO BAGS VALUES BY .001

RECEIVED
JUN 07 2018
Department of Ecology
Eastern Washington Office

Coneco
 Low Pro 12
 Cement
 Weigh Hopper

SPECIFICATIONS FOR MODEL 14-23 CEMENT BATCHER VENT

MODEL 14-23 SPECIFICATIONS

TOTAL CLOTH AREA	23 SQ. FT.
NUMBER OF BAGS	14
HOUSING HEIGHT	1'-10"
HOUSING WIDTH & LENGTH	0'-10" X 2'-11"
BAG CLEANING METHOD	REVERSE AIR FLOW (From batcher filling and emptying)
MAXIMUM OPERATING TEMPERATURE	170 DEGREES F
CAPACITY	180 CFM MAXIMUM
DISCHARGE SHAPE	(2) 2" X 12" SLOTS
CFM/FT ² THROUGH BAGS	7.83 MAXIMUM
AIRSPEED OUT OF DEVICE	545 FT / MIN
DIRECTION OF AIR DISCHARGE	DOWN
DISCHARGE AREA	.33 FT ² (48 IN ²)
NORMAL OPERATING TEMP & PRESSURE	AMBIENT
OUTLET MOISTURE CONTENT	IDEALLY ZERO

BAG SPECIFICATIONS

BAG DIAMETER	4-1/2" DIA.
BAG LENGTH	16"
CONSTRUCTION	3 X 1 TWILL
FIBER	POLYESTER
FINISH	GREIGE
WEIGHT	7.1 OZ./SQ. YD.
THICKNESS	0.019"
MULLEN BURST	275 PSI (Min)
PERMEABILITY RANGE (0.5" WATER)	30-55 CFM/SQ. FT.
BAG EFFICIENCY	99.9% (*)

BATCHER VENT

LB / HR
 GR / FT³

INTO BAGS

.00144 LB/YD³ * ___ YD³/HR
 .648 GR HR/LB FT³ * ___ LB/HR

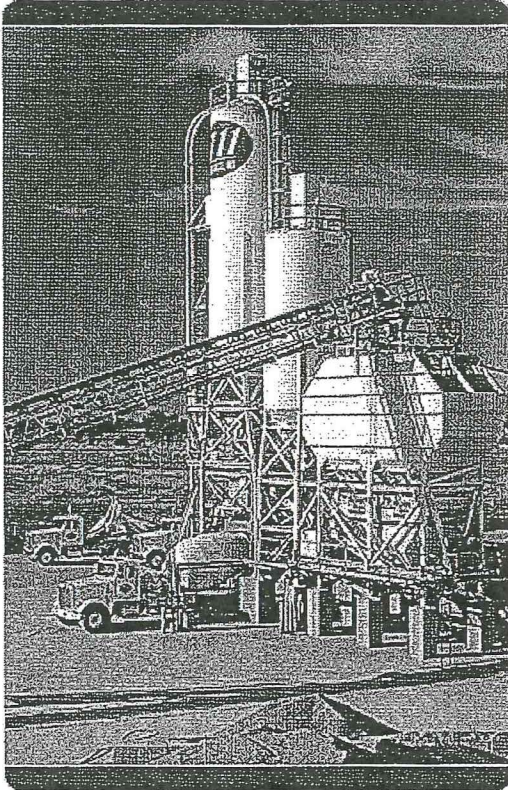
OUT OF BAGS

FOR ALL OUT OF BAGS VALUES, MULTIPLY THE INTO BAGS VALUES BY 0.001.

* BASED ON TESTS BY THE UNIVERSITY OF TENNESSEE.

RECEIVED
 JUN 07 2013
 Department of Ecology
 Eastern Washington Office

CON-E-CO HOME PRODUCTS ENGINEERING



MOBILE TRANSIT MIX

Innovative engineering allows the CON-E-CO LO-PRO to provide unequalled performance. Unique structural design means low overall height with maximum clearance at the discharge and 180 degree unobstructed truck access. The ultra-strong, unitized frame provides built-in strength and expansion capability for dust control systems, cement silos to 1000 barrels, and aggregate storage modules to over 300 cubic yards. These unique features reduce site preparation and lower erection costs. Production capacities of 50 to 300 yards per hour (35 to 225 cubic meters).

Uniform pre-blended materials are delivered to the mixer truck from the oversized aggregate and cement batchers and water systems for precise charging of trucks.

LO-PRO

Fully expanded plant with expanded aggregate storage, two cement storage silos and elevated truck mixer, dust collection, 10 -12 yard batch capacity with approximately 30 batches an hour. Incorporates recirculation cement batcher and live bottom aggregate batcher for superior performance and product quality.

LO-PRO 427

Standard 12 yard batch capacity. Large in truss cement silo hold 427 barrels (1708 cubic feet) volume. Available two compartment in truss silo. Low aggregate charging height and superior truck charging height. Standard hinged legs with self erect hydraulics for fast set up, superior mobility and low erection costs. Quick mobile silos, dust collectors and aggregate extensions.

LO-PRO RS

Fully unitized structure with all the benefits of the LO-PRO but using round silos for cement storage. Optional hinged legs with self erect hydraulics. Multiple compartment silos and aggregate extensions provided expandability and on-site advantages. Low erection costs tremendous flexibility.

ALL-PRO

The compact ALL-PRO offers significant operational and productivity benefits to producers. The ALL-PRO 12 features truck charging from any angle within a 180-degree arc that improves vehicle flow and simplifies site preparation. Other features include: a column-free drive through structure for truck loading; a larger single and split compartment silo; large aggregate storage bins; an overhead automatic recycling truck dust collector; and a patented LO-PRO® recirculating cement batcher. The ALL-PRO 5 model offers the same features and benefits, and its five cubic yard capacity is ideal for international markets.

Go to...

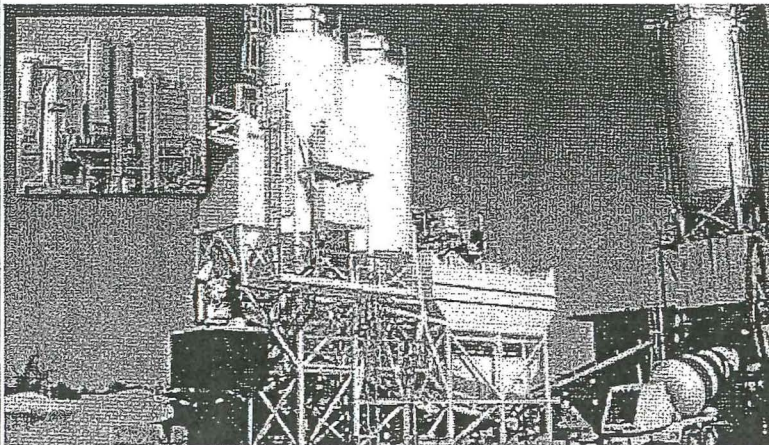
CON-E-CO



An Oshkosh Corporation Company

RECEIVED
 JUN 07 2019
 Department of Ecology
 Eastern Washington Office

MID ATLANTIC
 CONCRETE PLANTS
 PRODUCT LINES/PARTS
 SERVICES



[Home](#) > [Concrete Plants](#) > [Concrete Batch Plants](#) > CON-E-CO Lo-Pro 12RS

**CON-E-CO Lo-Pro 12RS
 Concrete Batch Plant**

PRODUCTION CAPACITY

Theoretical capacity — 2.5 to 3-minute cycles.

BATCHER CAPACITY

Aggregate — 12 cubic yards (9.2 cubic meters)
 Cement — 12 cubic yards (9.2 cubic meters)
 Scales — Suspension hopper type with load cells

AGGREGATE BATCHER CONVEYOR

30" wide (762 mm) with 10 HP drive.
 Optional 36" (914 mm), 15 HP drive.

AGGREGATE DISCHARGE CONVEYOR

30" wide (762 mm), 35" trough with 10 HP drive.
 Optional 36" (914 mm), 15 HP.

CEMENT BATCHER RECIRCULATING SCREW

14" diameter (360 mm), 15 HP.
 Optional 18" diameter (460 mm), 20 HP.

CEMENT FEEDER SCREWS

Two 9" diameter (230 mm) with 15 HP drive.
 Optional 12" diameter (300 mm), 20 HP.

CEMENT AERATION

5 HP, high volume, low pressure blower.

HIGH-PRESSURE AIR COMPRESSOR

10 HP with 120 gallon (0.45 cubic meters) receiver.
 Optional 15 to 25 HP.

ELECTRICAL

225 amp, 3-phase with 120 VAC transformer for control voltage. All motors are TEFC. All motor circuit wiring protected by individual circuit breakers. Electrical components housed in a NEMA 12 dust tight steel enclosure. Wiring in conduit. Minimum service size: 100 KVA.

BATCH CONTROL SYSTEM

Semi-automatic cut-off of cement by presets on digital readouts. Push-button for electric over air on gates. Optional full-automatic CON-E-CO Series computerized batch control system.

Contact Us

MAIN OFFICE:
 888-378-MACE (6223)
 info@maconcrete.com

SERVICE & PARTS:
 888-378-6237
 parts@maconcrete.com

SALES:
 888-378-6221
 sales@maconcrete.com

OFFICE LOCATION:
 116A West Airport Road
 Lititz, PA 17543

RECEIVED
 JUN 07 2018
 Department of Ecology
 Eastern Washington Office

- [Home](#) • [About Us](#) •
- [Concrete Plants](#) • [Product Lines/Parts](#) • [Services](#) •
- [Contact Us](#) • [Case Studies](#)
- [Project Photos](#) • [Used Equipment](#) • [News & Resources](#) • [Site Map](#) • [Privacy Policy](#)

WATER METER

CON-E-CO, 2" diameter (50 mm), all-electronic stainless steel turbine. 25 to 300 gallons (87 to 1,064 liters) per minute. Optional 3" diameter (77 mm) with up to 500 gallons (1,740 liters) per minute.

TRANSPORTATION SYSTEM

Rear-mounted, 36,000 lb. (16,330 kg) capacity tandem axle with eight 9:00 by 20 12-ply tires, wheels, air brakes, heavy-duty spring suspension, tail and brake lights, and fifth wheel rub plate with king pin.

STORAGE BIN CAPACITIES

AGGREGATE HEAPED VOLUME
50 to 270 cubic yards (380 to 200 cubic meters)

CEMENT I – GROSS VOLUME
1,600 to 2,940 cubic feet (45 to 83 cubic meters)

OPTION 2 COMPARTMENT

CEMENT II – GROSS VOLUME
1,600 to 2,940 cubic feet (45 to 83 cubic meters)

OPTION 2 COMPARTMENT
(Consult factory for larger storage capacities.)

DIMENSIONS

- Towing length 50' 0" (15.24 meters)
- Towing height 14' 0" (4.27 meters)
- Towing width 10' 0" (3.05 meters)
- Empty weight, total 44,000 lbs. (19,958 kg)
- Shipping volume 8,400 cubic feet (237 cubic meters)

NOTE: In accordance with CON-E-CO's policy of constantly improving its products, the above specifications are subject to change without notice. CON-E-CO assumes no responsibility for foundation design. Consult factory for column loadings.



[Download CON-E-CO Lo-Pro 12RS Concrete Batch Plant Information](#)

[Request additional information about the CON-E-CO Lo-Pro 12RS Concrete Batch Plant](#)

Visit [CON-E-CO](#) for additional information.

Department of Ecology
Eastern Washington Office

RECEIVED
JUN 07 2013

Proud Member of:



[Concrete Batch Plants](#)
[CON-E-CO 12RS](#)
[CON-E-CO 400 Series](#)
[CON-E-CO 427 Series](#)
[CON-E-CO 454L](#)

[Concrete Mixers](#)
[CON-E-CO Mixer](#)
[CON-E-CO HRM-12](#)

[Other Equipment](#)
[Dust Control Systems](#)

[CON-E-CO Batchmaster](#)
[CON-E-CO Lo-Pro](#)
[CON-E-CO Lo-Pro SSE](#)
[CON-E-CO Premier PLP](#)
[CON-E-CO SLP](#)

[ABOUT US](#) [CASE STUDIES](#) [PHOTOS](#) [USED EQUIPMENT](#) [NEWS](#) [RESOURCES](#) [CONTACT US](#)

<mailto:parts@maconcrete.com?subject=Parts%20Inquiry> <mailto:sales@maconcrete.com?subject=Sales%20Request> <mailto:info@maconcrete.com?subject=Info%20Request>
©2009 Mid Atlantic Concrete Equipment, Inc. • 116a West Airport Road, Lititz, PA 17543 • 888-378-MACE (6228)
[Concrete Plant](#) , [Concrete Batch Plants](#) : [Concrete Equipment](#) : [Mobile Concrete Plants](#) : [CON-E-CO Portable Batch Plant](#) , [Ready Mix Batch Plants](#) : [Mobile Batch Plants](#) : [Used Concrete Plant](#) : [Mixing Plant](#)

Call toll-free:
888-378-6223
Parts Hotline:
888-378-6237

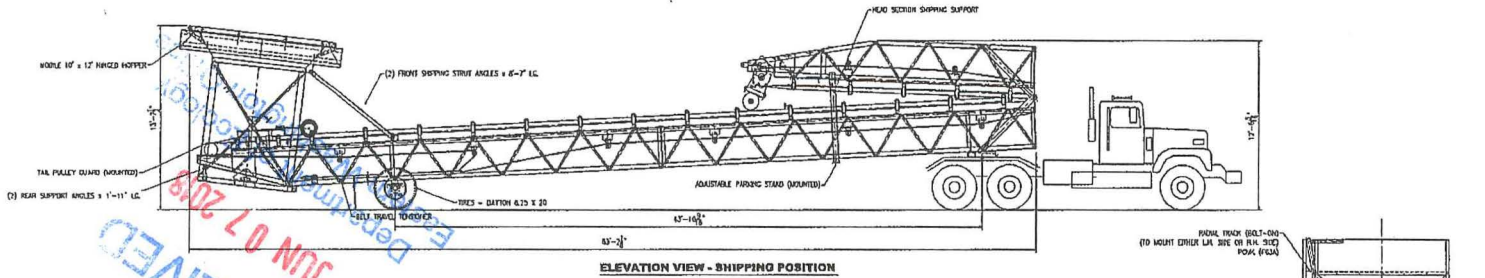
Read our white papers

View our client list

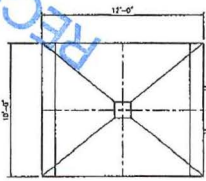


Department of Ecology
Eastern Washington Office

RECEIVED
JUN 07 2018



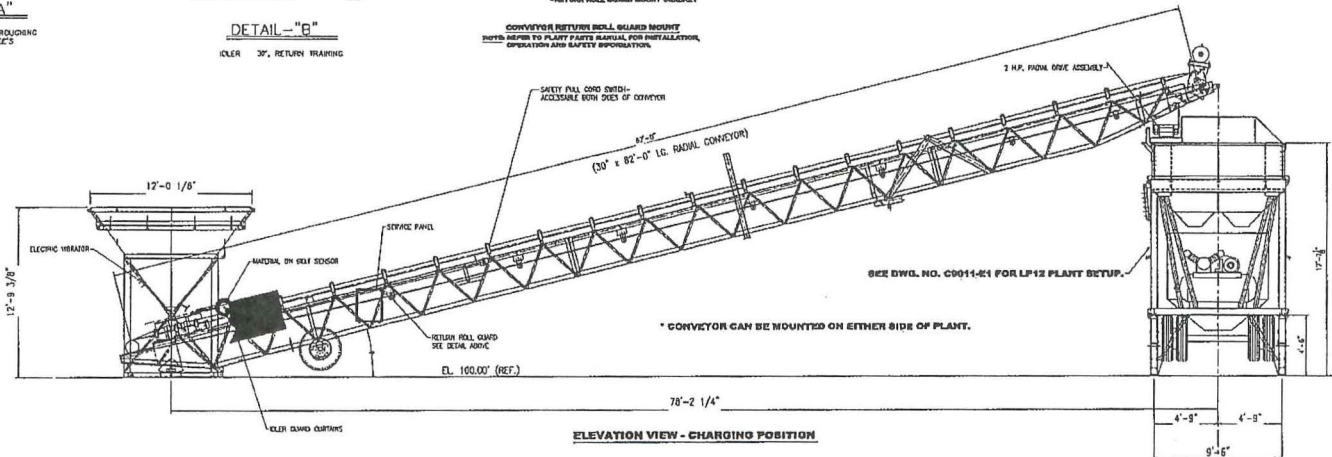
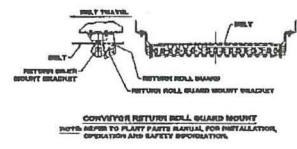
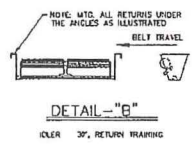
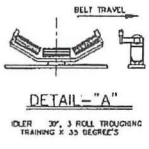
ELEVATION VIEW - SHIPPING POSITION



PLAN VIEW

*** 30' x 82'-0\"/>

QUAN	PC-NO	PART DESCRIPTION
1	33'	82' RADIAL CONVEYOR ASSEMBLY COMPLETE
1	MWD	W/DRIVE MOUNTING, INCLUDING GEAR, PULVERISER LIGHTS, PARKING STAND, WIRE FOR MOUNTED
1	MWD	10' x 17' RECEIVING HOPPER WITH INVERTED SEALS AND ELECTRIC TRIPPER MOUNTED
1	FSMA	RADIAL STACK ASSEMBLY
1	MWD	MATERIAL-DR-BELT SENSOR
1	MWD	PARKING STANDS PAINT
1	MWD	TAIL PULLEY GUARD
1	MWD	30' CONTINUOUS ASSEMBLY
1		RAVIO REMOTE CONTROL TRANSMITTER
1		COPIE NOBLE
18		ROD, 3/4\"/>
10		ROD, 7/8\"/>
15		ROD, 7/8\"/>

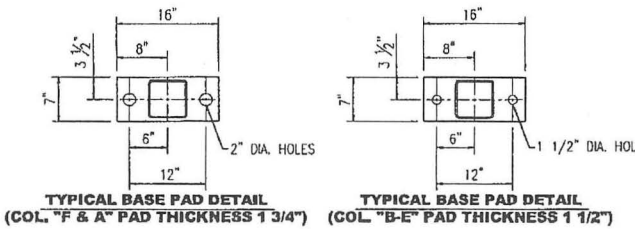
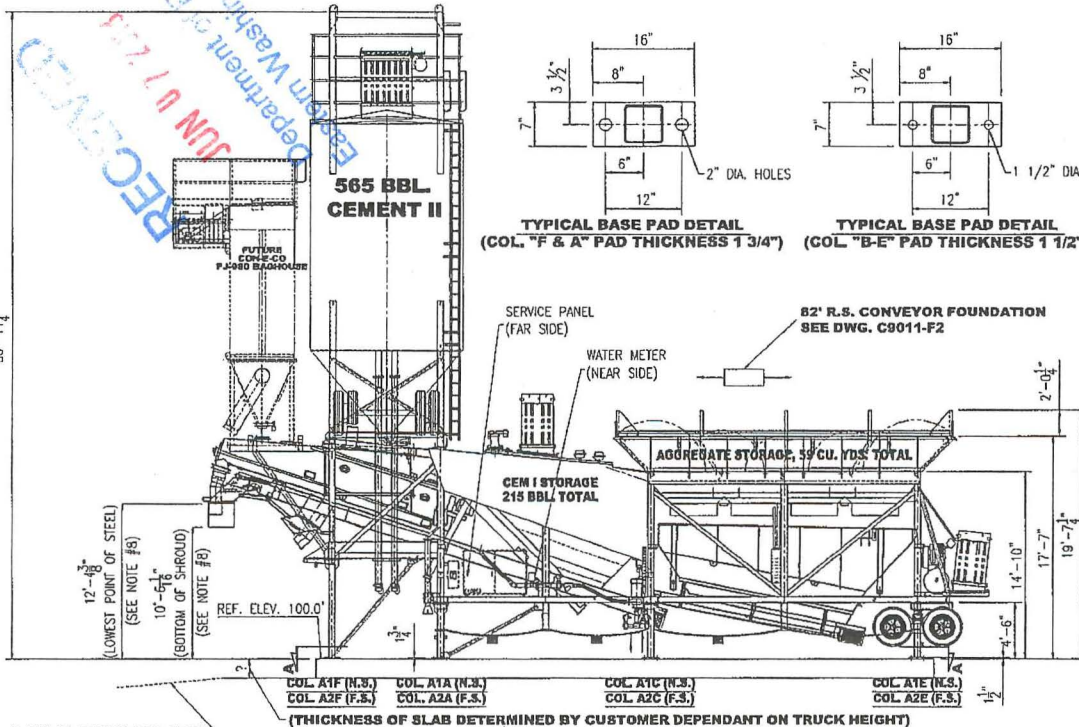


ELEVATION VIEW - CHARGING POSITION

- NOTES:
- SEE DWG. C9011-01 BY SITE PROP. MANUAL FOR PLANT FOUNDATION LAYOUT.
 - SEE DWG. C9011-01 FOR PLANT ASSEMBLY.
 - SEE DWG. C9011-02 FOR RIG CHANGING CONVEYOR ASSEMBLY.
 - SEE DWG. C9011-03 FOR RIG PRESSURE AIR ASSEMBLY.
 - SEE DWG. C9011-04 FOR RIG PRESSURE AIR ASSEMBLY.
 - SEE DWG. C9011-05 FOR WATER SYSTEM ASSEMBLY.
 - SEE DWG. C9011-06 FOR HYDRAULIC PLANTING ASSEMBLY.
 - SEE DWG. C9011-07 & 08 FOR RIG CHARGING CONVEYOR MACHINERY.
 - SEE OPERATOR'S MANUAL FOR STRUCTURAL BOLT (ASST) TIGHTENING SPECIFICATIONS.

SCALE	1/4" = 1'-0"	REV	A	DATE	05/18/07	PROJECT	CON-80	DRAWN	CON-80	CHECKED	CON-80	DATE	05/18/07	BY	CON-80	DATE	05/18/07	BY	CON-80
CORRECTED MACH. DWG. NO.										EUGENE SAND & GRAVEL									
EUGENE, OR.										CON-80									

RECEIVED
JUN 17 7 13
Department of Energy
Eastern Washington Office



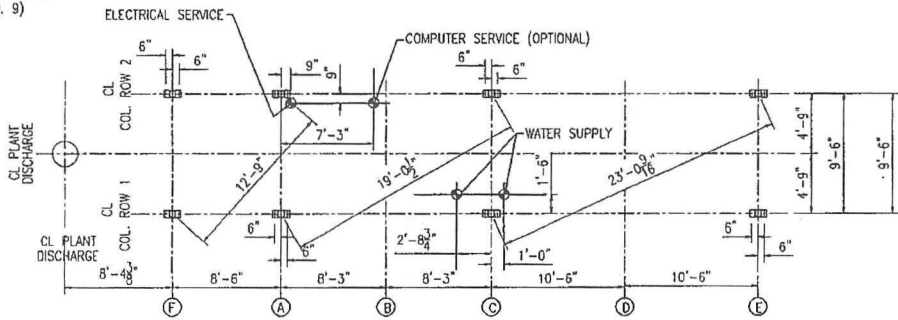
C9011L		INDIVIDUAL LOADS		FOUNDATION LOADS SUMMARY		
COLUMN	DEAD "D"	UNBALANCED AND LIVE "L"	VERT WIND "W"	DOWNLOAD SUMMARY D+L+W	UPLOAD WIND W-D	HORIZ WIND
F1	17.3	68.1	43.9	129.3	26.7	11.3
F2	17.3	68.1	43.9	129.3	26.7	11.3
A1	6.9	70.2	30.5	107.6	23.6	8.7
A2	6.9	70.2	30.5	107.6	23.6	8.7
C1	7.5	96.9	8.6	113.0	1.2	3.7
C2	7.5	96.9	8.6	113.0	1.2	3.7
B1	6.7	66.2	6.4	78.3	0.7	3.0
B2	6.7	66.2	6.4	78.3	0.7	3.0

**THE VALUES SHOWN ABOVE ARE IN KIPS, 1000 LB FORCE
WIND LOADS ARE CALCULATED ACCORDING TO
INTERNATIONAL BUILDING CODE, 90 MPH, EXPOSURE 'C'**

NOTES:

- (1) k = 1000 LBS.
- (2) ALL LOADS OCCUR AT THE BOTTOM OF BASE PLATES, TOP OF FOUNDATION.
- (3) WIND LOADS ARE BASED ON INTERNATIONAL BUILDING CODE, 90 MPH, EXPOSURE 'C'.
- (4) CONSULT WITH A REPUTABLE PROFESSIONAL ENGINEER FOR THE DESIGN OF THE FOUNDATION.
- (5) THE CONCRETE EQUIPMENT CO DOES NOT ASSUME RESPONSIBILITY FOR FOUNDATION DESIGN.
- (6) IMPORTANT: IF INSTALLING PLANT IN A PERMANENT LOCATION IT MAY BE DESIRABLE TO DESIGN FOUNDATION FOR FUTURE ADD ON STORAGE MODULES. CONSULT FACTORY FOR REVISED FOUNDATION LOADINGS.
- (7) EXTEND FOOTINGS BELOW FROST LINE.
- (8) BE SURE TO CHECK TRUCK HEIGHT BEFORE POURING DRIVEWAY AT ELEVATION 100.0'. CONVEYOR DISCHARGE HOOD GIVES 12'- 4 3/8" CLEARANCE TO LOWEST POINT (STEEL) AND 10'-6" CLEARANCE TO BOTTOM OF DISCHARGE SHROUD WITH BASE OF PLANT AT EL. 100.0'.
- (9) IT MAY BE DESIRABLE TO SLOPE MIXER TRUCK RAMP 18" PER TRUCK LENGTH FOR EASIER MIXER TRUCK CHARGING.
- (10) THIS PLANT IS NOT DESIGNED FOR EARTHQUAKE LOADS.

IT MAY BE DESIRABLE TO SLOPE DRIVEWAY (SEE NOTE NO. 9)



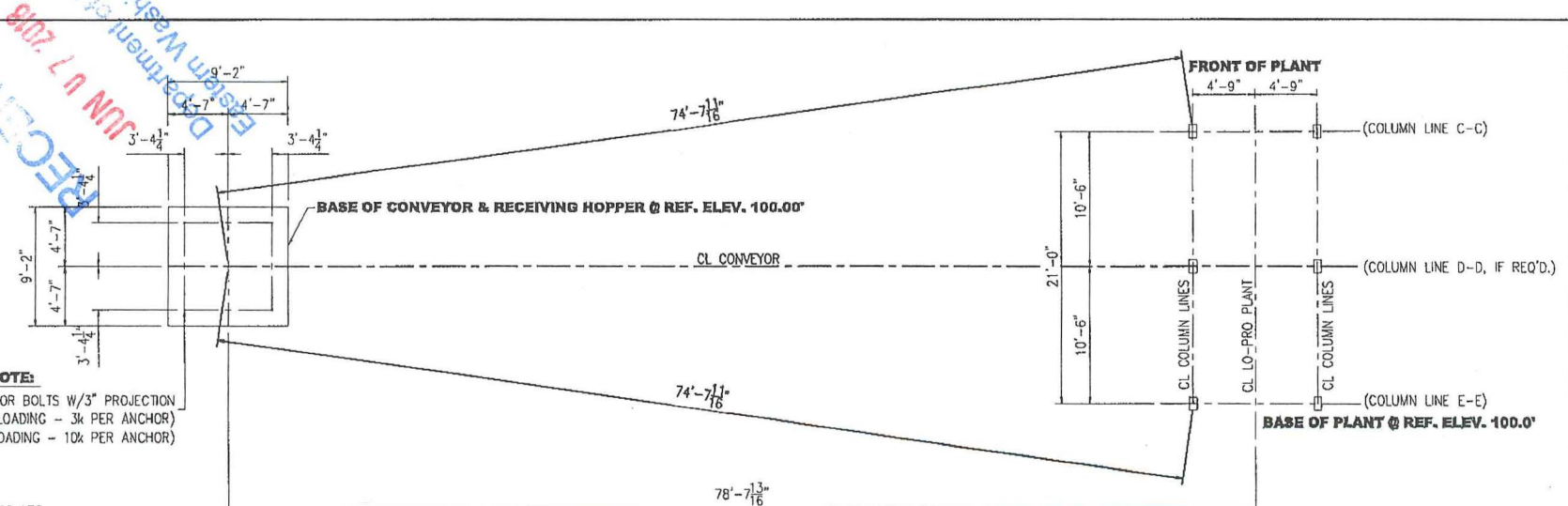
SECTION VIEW "A-A"

NO. 1	DATE	BY	CHKD.	APP'D.	REV.	DESCRIPTION
1	05/14/07	BR	BR	BR		MOBILE FOUNDATION LAYOUT
2						EUGENE SAND & GRAVEL
3						EUGENE, OR.

CON-E-CO
1774 1/2th St. Eugene, OR 97401
503-344-4444
www.con-e-co.com

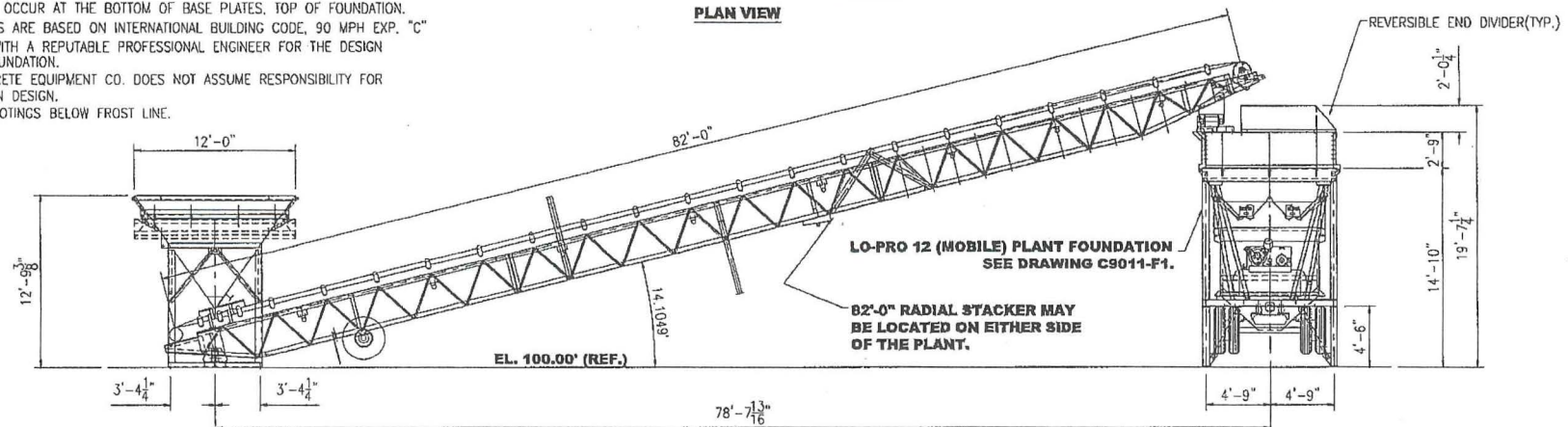
CON-E-CO
EUGENE, OR.
C9011-F1

RECEIVED
 JUN 17 2008
 Department of Ecology
 Eastern Washington Office



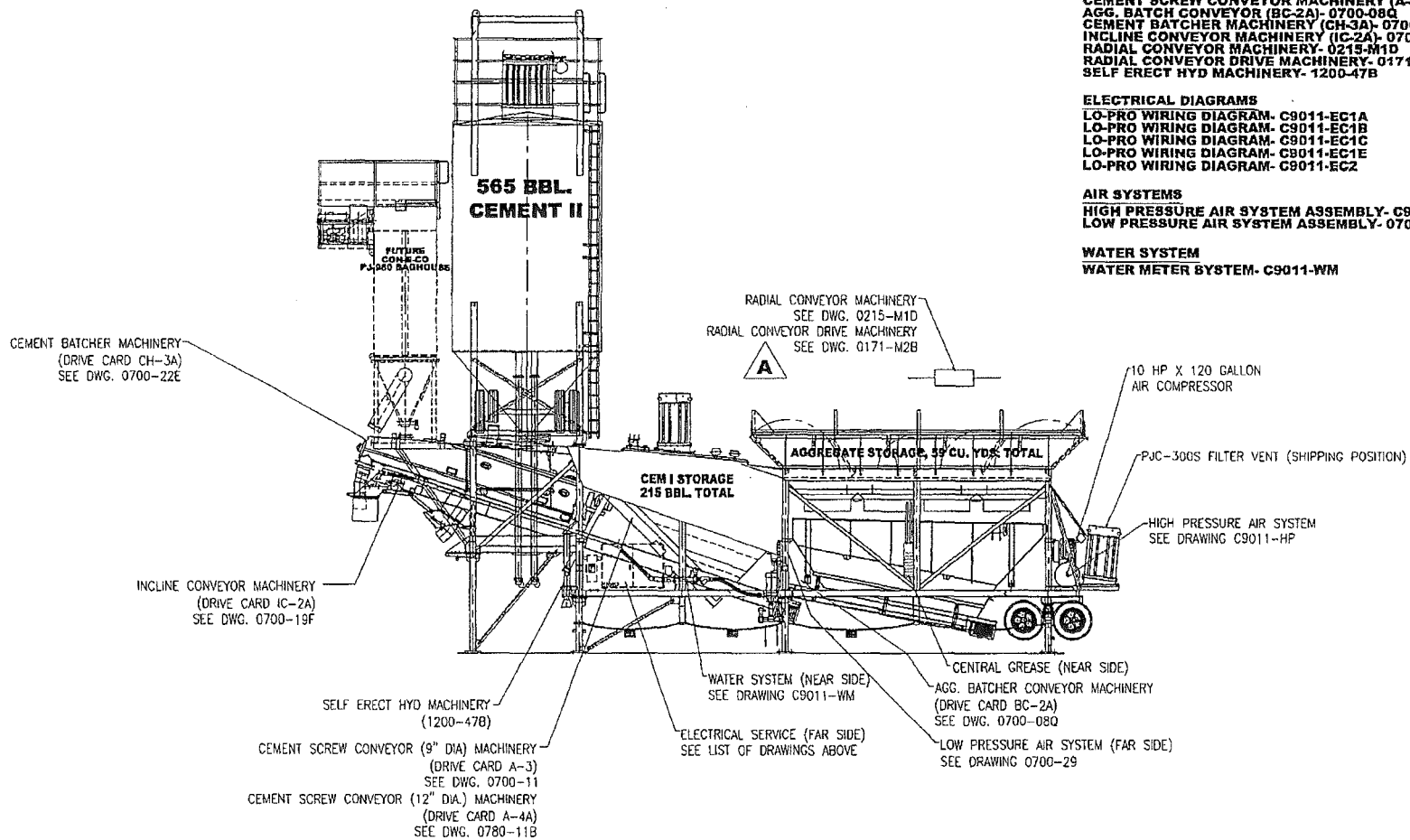
HOPPER BOLT NOTE:
 (4) 3/4" DIA. ANCHOR BOLTS W/3" PROJECTION
 (PIVOT BASE LOADING - 3k PER ANCHOR)
 HOPPER LOADING - 10k PER ANCHOR

- NOTES:**
- (1) k = 1000 LBS.
 - (2) ALL LOADS OCCUR AT THE BOTTOM OF BASE PLATES, TOP OF FOUNDATION.
 - (3) WIND LOADS ARE BASED ON INTERNATIONAL BUILDING CODE, 90 MPH EXP. "C"
 - (4) CONSULT WITH A REPUTABLE PROFESSIONAL ENGINEER FOR THE DESIGN OF THE FOUNDATION.
 - (5) THE CONCRETE EQUIPMENT CO. DOES NOT ASSUME RESPONSIBILITY FOR FOUNDATION DESIGN.
 - (6) EXTEND FOOTINGS BELOW FROST LINE.



SCALE	3/16" = 1'-0"	TITLE	82' MOBILE RADIAL CONVEYOR LAYOUT	JOB NO.		ITEM CODE	FL	CDPV	
DATE	05/14/07	CUSTOMER	EUGENE SAND & GRAVEL						
DRAWN BY	RDR	LOCATION	EUGENE, OR.						
CHECKED	GLA								
WEIGHT									
NEXT ASSY.	ECO NO.	DATE	APPR. NO.	REVISION					

CON-E-CO
 An DeMunnick Trust Corporation Company
 concrete equipment company
 807 N. GUY ST. SEASIDE, NE 98138
 phone: 425-435-4881 website: con-e-co.com
 1/2" AND 3/4" SCALE REVISED
 SIZE D REV. 1 OBS. C9011-F2



MACHINERY LISTS

CEMENT SCREW CONVEYOR MACHINERY (A-3)- 0700-11
 CEMENT SCREW CONVEYOR MACHINERY (A-4A)- 0780-11B
 AGG. BATCH CONVEYOR (BC-2A)- 0700-08G
 CEMENT BATCHER MACHINERY (CH-3A)- 0700-22E
 INCLINE CONVEYOR MACHINERY (IC-2A)- 0700-19F
 RADIAL CONVEYOR MACHINERY- 0215-M1D
 RADIAL CONVEYOR DRIVE MACHINERY- 0171-M2B
 SELF ERECT HYD MACHINERY- 1200-47B

ELECTRICAL DIAGRAMS

LO-PRO WIRING DIAGRAM- C8011-EC1A
 LO-PRO WIRING DIAGRAM- C8011-EC1B
 LO-PRO WIRING DIAGRAM- C8011-EC1C
 LO-PRO WIRING DIAGRAM- C8011-EC1E
 LO-PRO WIRING DIAGRAM- C8011-EC2

AIR SYSTEMS

HIGH PRESSURE AIR SYSTEM ASSEMBLY- C9011-HP
 LOW PRESSURE AIR SYSTEM ASSEMBLY- 0700-29

WATER SYSTEM

WATER METER SYSTEM- C9011-WM

		E		SCALE	1/8" = 1'-0"	TITLE	FIELD SERVICE	JOB NO.	ITEM CODE	FS	COPY
		D		DATE	05/22/07	CUSTOMER	EUGENE SAND & GRAVEL				
		C		DRAWN	RDR	LOCATION	EUGENE, OR.				
		B		CHECKED		CON-E-CO	An Oakbrook Trust Corporation Company				
		A		REVISION		297 N. CR 1st St. (W) Eugene, OR 97408	phone: 402-462-488				
NEXT ASSY.	ECO NO.	DATE	APPR.	NO.	REVISION	WEIGHT	CHECKED	SIZE	REV.	QBS.	PART NO.
		6-25-07	JON.	A	CORRECTED MACH. DWG. NO.			B			C9011-FS

RECEIPT

Department of Ecology (4610)
PO Box 47611
Olympia, WA 98504-7611
(360) 407-7095

Receipt Number
Manual Receipt

18CJ021379

Document Number **461U1883 CJ** Date **06/04/2018** FM 12

Remitter Name **CPM DEVELOPMENT CORPORATION** Receipt Name

Check/Draw Number **103008044**

Document Amount **785.00**

Method of Payment **Check**

Comment Description **NSR**

REF DOC NR	REF DOC SFX	INV NR	ID NR	SUB ID NR	T	C	R	FUND	MAJ GRP	MAG SRC	SUB SRC	CNTY	WORK CLS	PIC	AI	ORG	PRJ	SUB PRJ	PRJ PHS	SUB OBJ	SUB SUB OBJ	VAR GL	SUB DR	SID CR	SUB SID	ALLOC	AMT
			ERO		001		216	02	99	000404																	785.00

RECEIVED
JUN 07 2018
Department of Ecology
Eastern Washington Office

ORIGIN ID: GEGA (509) 534-6221
ROBYN LAMPERT
SPM DEVELOPMENT CORPORATION
3111 EBROADWAY
SPOKANE VALLEY, WA 99212
UNITED STATES US

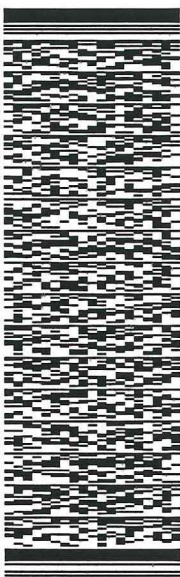
SHIP DATE: 31MAY18
ACTWGT: 0.50 LB
CAD: 4410020INMET3980

BILL SENDER

TO CASHIER UNIT
DEPT OF ECOLOGY
PO BOX 47611

OLYMPIA WA 98504

(509) 536-3001 REF: HEDI NILLES
INV: DEPT:
PO:



J181119012691uv

552.02782BIDCA5

TRK# 7723 6323 3112
0201

FRI - 01 JUN 10:30A
PRIORITY OVERNIGHT

XH OLMA

98504
WA-US SEA



After printing this label:

1. Use the 'Print' button on this page to print your label to your laser or inkjet printer.
2. Fold the printed page along the horizontal line.
3. Place label in shipping pouch and affix it to your shipment so that the barcode portion of the label can be read and scanned.

Warning: Use only the printed original label for shipping. Using a photocopy of this label for shipping purposes is fraudulent and could result in additional billing charges, along with the cancellation of your FedEx account number.

Use of this system constitutes your agreement to the service conditions in the current FedEx Service Guide, available on fedex.com. FedEx will not be responsible for any claim in excess of \$100 per package, whether the result of loss, damage, delay, non-delivery, misdelivery, or misinformation, unless you declare a higher value, pay an additional charge, document your actual loss and file a timely claim. Limitations found in the current FedEx Service Guide apply. Your right to recover from FedEx for any loss, including intrinsic value of the package, loss of sales, income interest, profit, attorney's fees, costs, and other forms of damage whether direct, incidental, consequential, or special is limited to the greater of \$100 or the authorized declared value. Recovery cannot exceed actual documented loss. Maximum for items of extraordinary value is \$1,000, e.g. jewelry, precious metals, negotiable instruments and other items listed in our Service Guide. Written claims must be filed within strict time limits, see current FedEx Service Guide.

18 JUN -1 P2:19
DEPT. OF ECOLOGY
FISCAL BUDGET

REC'D
JUN 6 2018